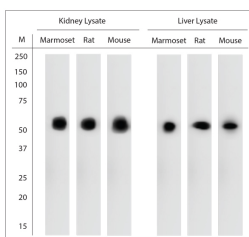


## Rabbit antibody to Catalase

<b>Code</b>	OSC00164W
<b>ID Tag</b>	Rb1024-280609-WS
<b>Unit size</b>	100 µl
<b>Immunogen</b>	A synthetic peptide from mouse Catalase conjugated to blue carrier protein was used as the antigen. The antigen is homologous in many other species including rat, human, marmoset, zebrafish, xenopus and guinea pig.
<b>Conjugate</b>	Unconjugated antibody
<b>Also known</b>	CATA, CAT
<b>Host</b>	NZ white rabbit
<b>Purity</b>	Whole serum
<b>Clonality</b>	Polyclonal
<b>Isotype</b>	Polyclonal, whole serum
<b>Applications</b>	IHC, WB. A dilution of 1: 2000 is recommended for IHC-P and 1: 7000 for WB. The optimal dilution should be determined by the end user. Not yet tested in other applications.
<b>Specificity</b>	Specific for Catalase.
<b>Spcs X-react.</b>	Mouse, rat, human, xenopus, zebrafish. Not yet tested in other species.
<b>Format</b>	Lyophilised
<b>Reconstitution</b>	Reconstitute in 100 µl of sterile water. Centrifuge to remove any insoluble material.
<b>Storage</b>	Maintain the lyophilised/reconstituted antibodies frozen at -20°C for long term storage and refrigerated at 2-8°C for a shorter term. When reconstituting, glycerol (1:1) may be added for an additional stability. Avoid freeze and thaw cycles.
<b>Expiry Date</b>	12 months after reconstitution
<b>Shipping</b>	This item will be shipped to you at ambient temperature in a lyophilised form.
<b>Limitation</b>	For research use only



WB on rat liver lysate. Blocking with 1% LFDm for 30 min at RT; Primary antibody used at 1:7000 dilution incubated overnight at 4C. Click on eLAB BOOK tab to see the details.