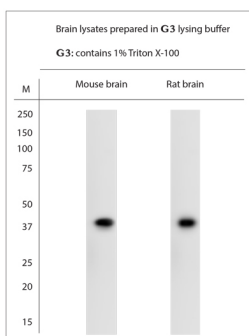


Rabbit antibody to MRGPRF

Code	OSM00071G
ID Tag	Rb3073-180617-G
Unit size	500 Å, Åµg
Immunogen	A synthetic peptide mouse MRGPRF conjugated to blue carrier protein was used as the antigen.
Conjugate	Unconjugated antibody
Also known	Mas-related G-protein coupled receptor, member F, Mas-related gene F protein, G-protein coupled receptor RTA, Mrgf, Rta, GPR140, GPR168, MGC21621, G-protein coupled receptor 140, G-protein coupled receptor 168
Host	NZ white rabbit
Purity	IgG
Clonality	Polyclonal
Isotype	Polyclonal, IgG
Applications	IHC, WB. A concentration of 10-50 µg/ml is recommended. The optimal concentration should be determined by the end user. Not yet tested in other applications.
Specificity	Specific for MRGPRF.
Spcs X-react.	Rat, mouse. Other species not yet tested.
Format	Lyophilised
Reconstitution	Reconstitute in 500 µl of sterile water. Centrifuge to remove any insoluble material.
Storage	Maintain the lyophilised/reconstituted antibodies frozen at -20°C for long term storage and refrigerated at 2-8°C for a shorter term. When reconstituting, glycerol (1:1) may be added for an additional stability. Avoid freeze and thaw cycles.
Expiry Date	12 months after reconstitution
Shipping	This item will be shipped to you at ambient temperature in a lyophilised form.
Limitation	For research use only



WB on brain lysates. Blocking: 1% LFDM for 30 min at RT; primary antibody: dilution 10 µg/ml incubated at 4°C overnight. Click on eLAB BOOK tab to see the details.

Related Products

OSR00105W Rabbit antibody to MRGPRF