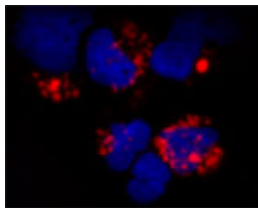


Rabbit antibody to TLR9 (830-880)

Code	OST00297W
ID Tag	Rb984-280609-WS
Unit size	100 ul
Immunogen	A synthetic peptide from aa region 830-880 of human TLR9 conjugated to blue carrier protein was used as the antigen.
Conjugate	Unconjugated antibody
Also known	Toll-like receptor 9
Host	NZ white rabbit
Purity	Whole serum
Clonality	Polyclonal
Isotype	Polyclonal, whole serum
Applications	IHC, WB, Flow Cyt. A dilution of 1 : 300 to 1 : 2000 is recommended. The optimal dilution should be determined by the end user. Not yet tested in other applications.
Specificity	Specific for TLR9.
Spcs X-react.	Human. Other species not yet tested.
Format	Lyophilised
Reconstitution	Reconstitute in 100 ul of sterile water. Centrifuge to remove any insoluble material.
Storage	Maintain the lyophilised/reconstituted antibodies frozen at -20C for long term storage and refrigerated at 2-8C for a shorter term. When reconstituting, glycerol (1:1) may be added for an additional stability. Avoid freeze and thaw cycles.
Expiry Date	12 months after reconstitution
Shipping	This item will be shipped to you at ambient temperature in a lyophilised form.
Limitation	For research use only



IF on human plasmacytoid dendritic cells. Cells were fixed with 2% formaldehyde for 10 minutes at 37°C. Washed twice with PBS before cytopspin the cells onto microscope slides. Cells were blocked with PBS containing 1%BSA for 20 minutes at room temperature (RT). Excess of blocking solution was removed and cells were then incubated with Rabbit antibody to TLR9 (830-880) (OST00297W) for 30 min at RT (diluted 1:100 in the blocking buffer). Washed 3X with PBS and incubated with anti-Rabbit Alexa 586 for further 30 minutes. Washed as before and nuclear counterstained with DAPI.

Related Products

OST00299G	Rabbit antibody to TLR9 (830-880)
OST00315W	Goat antibody to TLR9 (830-880)