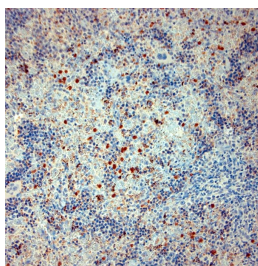


Rabbit antibody to mouse Cathelicidin

Code	OSC00140G
ID Tag	Rb4056-21052022-WS
Unit size	500 ug
Immunogen	A synthetic peptide from mouse Cathelicidin conjugated to blue carrier protein has been used as the antigen.
Conjugate	Unconjugated antibody
Also known	CAMP, FALL39, FALL-39, 18 kDa cationic antimicrobial protein, CAP-18, LL37, CRAMP, HSD26, Cathelin-like protein, 18 kDa cationic antimicrobial protein
Host	NZ white rabbit
Purity	IgG
Clonality	Polyclonal
Isotype	Polyclonal, IgG
Applications	IHC, WB. Use at a concentration of 10-50 ug/ml. The optimal concentration should be determined by the end user. Not yet tested in other applications.
Specificity	Specific for Cathelin related antimicrobial peptide.
Spcs X-react.	Mouse. Other species not yet tested.
Format	Lyophilised
Reconstitution	Reconstitute in 500 ul of sterile water. Centrifuge to remove any insoluble material.
Storage	Maintain the lyophilised/reconstituted antibodies frozen at -20C for long term storage and refrigerated at 2-8C for a shorter term. When reconstituting, glycerol (1:1) may be added for an additional stability. Avoid freeze and thaw cycles.
Expiry Date	12 months after reconstitution
Shipping	This item will be shipped to you at ambient temperature in a lyophilised form.
Limitation	For research use only



IHC-P on paraffin sections of mouse spleen.

The animal was perfused using Autoperfuser at a pressure of 130 mmHg with 300 ml 4% FA before being processed for paraffin embedding. HIER: Tris-EDTA, pH 9 for 20 min using Thermo PT Module.

Blocking: 0.2% LFDM in TBST filtered thru 0.2 µm.

Detection was done using Novolink HRP polymer from Leica following manufacturers instructions; DAB chromogen: Candela DAB chromogen from Osenses.

Primary antibody: 2ug/ml, incubated 30 min at RT using Autostainer.

Sections were counterstained with Harris Hematoxylin.

Related Products

OSC00043W Rabbit antibody to mouse Cathelicidin