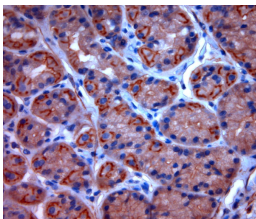


## Rabbit antibody to TPC2 (700-752)

<b>Code</b>	OST00270G
<b>ID Tag</b>	Rb2508-140415-WS
<b>Unit size</b>	500 Å, Åµg
<b>Immunogen</b>	A synthetic peptide from aa region 700-752 of human TPC2 conjugated to blue carrier protein was used as the antigen.
<b>Conjugate</b>	Unconjugated antibody
<b>Also known</b>	Two pore calcium channel protein 2, Voltage-dependent calcium channel protein TPC2, TPCN2
<b>Host</b>	NZ white rabbit
<b>Purity</b>	IgG
<b>Clonality</b>	Polyclonal
<b>Isotype</b>	Polyclonal, IgG
<b>Applications</b>	IHC, WB. A concentration of 10-50 µg/ml is recommended. The optimal concentration should be determined by the end user. Not tested in other applications.
<b>Specificity</b>	Specific for TPC2.
<b>Spcls X-react.</b>	Human. Other species not yet tested.
<b>Format</b>	Lyophilised
<b>Reconstitution</b>	Reconstitute in 500 µl of sterile water. Centrifuge to remove any insoluble material.
<b>Storage</b>	Maintain the lyophilised/reconstituted antibodies frozen at -20°C for long term storage and refrigerated at 2-8°C for a shorter term. When reconstituting, glycerol (1:1) may be added for an additional stability. Avoid freeze and thaw cycles.
<b>Expiry Date</b>	12 months after reconstitution
<b>Shipping</b>	This item will be shipped to you at ambient temperature in a lyophilised form.
<b>Limitation</b>	For research use only



IHC-P on paraffin sections of human stomach. HIER: Tris-EDTA, pH 9 for 20 min using Thermo PT Module. Blocking: 0.2% LFDM in TBST filtered thru 0.2 µm. Detection was done using Novolink HRP polymer from Leica following manufacturers instructions. Primary antibody: dilution 10 ug/ml, incubated 30 min at RT using Autostainer. Sections were counterstained with Harris Hematoxylin.