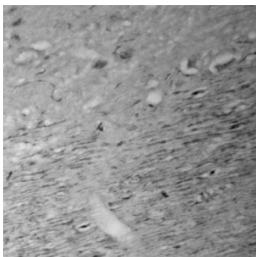


Rabbit antibody to CACNA1I

| | |
|-----------------------|---|
| Code | OSC00089W |
| ID Tag | Rb809-140209-WS |
| Unit size | 100 µl |
| Immunogen | A synthetic peptide from a cytoplasmic domain of human CACNA1I (Cav3.3) conjugated to an immunogenic carrier protein was used as the antigen. The peptide is homologous in rat and mouse. |
| Conjugate | Unconjugated antibody |
| Also known | Voltage-dependent T-type calcium channel subunit alpha-1I, Voltage-gated calcium channel subunit alpha Cav3.3 |
| Host | NZ white rabbit |
| Purity | Whole serum |
| Clonality | Polyclonal |
| Isotype | Polyclonal, whole serum |
| Applications | IHC, WB. A dilution of 1 : 300 to 1 : 2000 is recommended. The optimal dilution should be determined by the end user. Not tested in other applications. |
| Specificity | Specific for CACNA1I. |
| Spcs X-react. | Human, rat, mouse. Other species not yet tested. |
| Format | Lyophilised |
| Reconstitution | Reconstitute in 100 µl of sterile water. Centrifuge to remove any insoluble material. |
| Storage | Maintain the lyophilised/reconstituted antibodies frozen at -20°C for long term storage and refrigerated at 2-8°C for a shorter term. When reconstituting, glycerol (1:1) may be added for an additional stability. Avoid freeze and thaw cycles. |
| Expiry Date | 12 months after reconstitution |
| Shipping | This item will be shipped to you at ambient temperature in a lyophilised form. |
| Limitation | For research use only |



IHC on rat brain (paraffin section) using Rabbit antibody to CACNA1I (OSC00089W) at 1 : 500 dilution incubated overnight at 4C. Nerve fibers are intensely stained.

Related Products

OSC00115G Rabbit antibody to CACNA1I