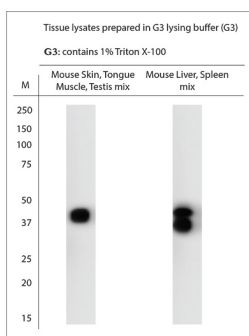


Rabbit antibody to SEC22A

Code	OSS00118G
ID Tag	Rb758-140209-G
Unit size	500 ug
Immunogen	A synthetic from human SEC22A conjugated to blue carrier protein was used as the antigen. The antigen is homologous in rat and mouse.
Conjugate	Unconjugated antibody
Also known	SEC22A, SEC22L2, SEC22 vesicle trafficking protein-like 2, SEC22 vesicle trafficking protein homolog A
Host	NZ white rabbit
Purity	IgG
Clonality	Polyclonal
Isotype	Polyclonal, IgG
Applications	IHC, WB. A concentration of 10-50 ug/ml is recommended. The optimal concentration should be determined by the end user. Not yet tested in other applications.
Specificity	Specific for SEC22A
Spcs X-react.	Human, rat, mouse. Other species not yet tested.
Format	Lyophilised
Reconstitution	Reconstitute in 500 ul of sterile water. Centrifuge to remove any insoluble material.
Storage	Maintain the lyophilised/reconstituted antibodies frozen at -20C for long term storage and refrigerated at 2-8C for a shorter term. When reconstituting, glycerol (1:1) may be added for an additional stability. Avoid freeze and thaw cycles.
Expiry Date	12 months after reconstitution
Shipping	This item will be shipped to you at ambient temperature in a lyophilised form.
Limitation	For research use only



WB on tissue lysates. Blocking: 1% LFDM for 30 min at RT; primary antibody: 10 ug/ml incubated at 4C overnight. Click on eLAB BOOK tab to see the details.

Related Products

OSS00117W Rabbit antibody to SEC22A