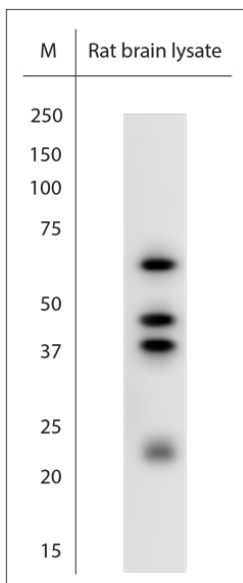


Rabbit antibody to SUMO1

| | |
|-----------------------|---------------------------------------------------------------------------------------------------------------------------------------------------------------------------------------------------------------------------------------------------|
| Code | OSS00109W |
| ID Tag | Rb2776-080616-WS |
| Unit size | 150 µl |
| Immunogen | A synthetic peptide from mouse SUMO 1 conjugated to blue carrier protein was used as the antigen. The antigen is homologous in human, rat and marmoset. |
| Conjugate | Unconjugated antibody |
| Also known | Small ubiquitin-related modifier 1, SUMO-1, Sumo1 |
| Host | NZ white rabbit |
| Purity | Whole serum |
| Clonality | Polyclonal |
| Isotype | Polyclonal, whole serum |
| Applications | IHC, WB. A dilution of 1: 500 is recommended. The optimal dilution should be determined by the end user. Not yet tested in other applications. |
| Specificity | Specific for SUMO1. |
| Spcs X-react. | Rat, mouse, human, marmoset. Other species not yet tested. |
| Format | Lyophilised |
| Reconstitution | Reconstitute in 150 µl of sterile water. Centrifuge to remove any insoluble material. |
| Storage | Maintain the lyophilised/reconstituted antibodies frozen at -20°C for long term storage and refrigerated at 2-8°C for a shorter term. When reconstituting, glycerol (1:1) may be added for an additional stability. Avoid freeze and thaw cycles. |
| Expiry Date | 12 months after reconstitution |
| Shipping | This item will be shipped to you at ambient temperature in a lyophilised form. |
| Limitation | For research use only |



WB on rat brain lysate. Lysate was prepared in Ripa containing 1% Triton X-100, 1% SDS and 1% SDC. Blocking: 1% LFDM for 30 min at RT; primary antibody: dilution 1:500 incubated at 4C overnight. Click on eLAB BOOK tab to see the details.

Related Products

OSS00110G Rabbit antibody to SUMO1