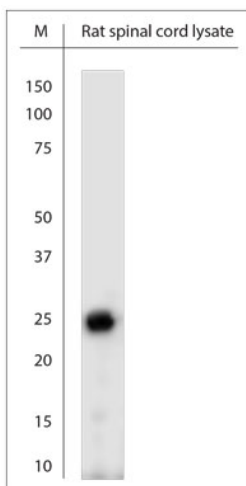


Rabbit antibody to RhoF (130-180)

Code	OSR00316W
ID Tag	Rb789-140209-WS
Unit size	100 µl
Immunogen	A synthetic peptide from aa region 130-180 of human RhoF conjugated to blue carrier protein was used as the antigen. The antigen is homologous in rat and mouse.
Conjugate	Unconjugated antibody
Also known	Rho family GTPase Rif, Rho in filopodia, ARHF, RIF, Rho in filopodia
Host	NZ white rabbit
Purity	Whole serum
Clonality	Polyclonal
Isotype	Polyclonal, whole serum
Applications	IHC, WB. A dilution of 1 : 300 to 1 : 2000 is recommended. The optimal dilution should be determined by the end user. Not yet tested in other applications.
Specificity	Specific for RhoF.
Spcs X-react.	Human, rat, mouse. Other species not yet tested.
Format	Lyophilised
Reconstitution	Reconstitute in 100 µl of sterile water. Centrifuge to remove any insoluble material.
Storage	Maintain the lyophilised/reconstituted antibodies frozen at -20°C for long term storage and refrigerated at 2-8°C for a shorter term. When reconstituting, glycerol (1:1) may be added for an additional stability. Avoid freeze and thaw cycles.
Expiry Date	12 months after reconstitution
Shipping	This item will be shipped to you at ambient temperature in a lyophilised form.
Limitation	For research use only



WB on rat spinal cord lysate using Rabbit antibody to RhoF (130-180) (OSR00316W) at 1:500 dilution. Incubated 30 min at RT with shake. Blocking: 0.5% LFDM in 1x PBS containing 0.1% Tween-20

Related Products

OSR00320G Rabbit antibody to RhoF (130-180)