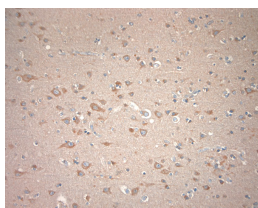


Rabbit antibody to KCNA3 (200-250)

Code	OSK00003W
ID Tag	Rb742-061208-WS
Unit size	100 Åµl
Immunogen	A synthetic peptide from aa region 200-250 of human KCNA3 conjugated to blue carrier protein was used as the antigen. The peptide shares 91% with rat and mouse sequence.
Conjugate	Unconjugated antibody
Also known	Voltage-gated potassium channel subunit Kv1.3, HPCN3, HGK5, HuKIII, HLK3, HGK5, Potassium voltage-gated channel subfamily A member 3
Host	NZ white rabbit
Purity	Whole serum
Clonality	Polyclonal
Isotype	Polyclonal, whole serum
Applications	IHC, WB. A dilution of 1 : 1000 to 1 : 2000 is recommended. The optimal dilution should be determined by the end user. Not yet tested in other applications.
Specificity	Specific for KCNA3.
Spes X-react.	Human, mouse, rat. Other species not yet tested.
Format	Lyophilised
Reconstitution	Reconstitute in 100 µl of sterile water. Centrifuge to remove any insoluble material.
Storage	Maintain the lyophilised/reconstituted antibodies frozen at -20C for long term storage and refrigerated at 2-8C for a shorter term. When reconstituting, glycerol (1:1) may be added for an additional stability. Avoid freeze and thaw cycles.
Expiry Date	12 months after reconstitution
Shipping	This item will be shipped to you at ambient temperature in a lyophilised form.
Limitation	For research use only



IHC-P on paraffin sections of human brain. HIER: Tris-EDTA, pH 9 for 20 min using Thermo PT Module. Blocking: 0.2% LFDM in TBST filtered thru 0.2 µm. Detection was done using Novolink HRP polymer from Leica following manufacturers instructions. Primary antibody: dilution 1: 1000, incubated 30 min at RT using Autostainer. Sections were counterstained with Harris Hematoxylin.

Related Products

OSK00067W Rabbit antibody to KCNA3