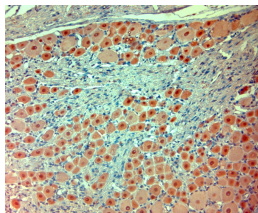


Rabbit antibody to extracellular ASIC1 (100-150)

Code	OSA00064W
ID Tag	Rb1452-120610-WS
Unit size	100 µl
Immunogen	A synthetic peptide from aa region 100-150 of the extracellular domain of rat ASIC1 conjugated to blue carrier protein was used as the antigen. The peptide is homologous in mouse and human.
Conjugate	Unconjugated antibody
Also known	Acid-sensing ion channel 1, Brain sodium channel 2, BNaC2, ACCN2
Host	NZ white rabbit
Purity	Whole serum
Clonality	Polyclonal
Isotype	Polyclonal, whole serum
Applications	IHC, WB. A dilution of 1 : 300 to 1 : 2000 is recommended. The optimal dilution should be determined by the end user. Not yet tested in other applications.
Specificity	Specific for ASIC1.
Spcs X-react.	Rat, mouse, human. Other species not yet tested.
Format	Lyophilised
Reconstitution	Reconstitute in 100 µl of sterile water. Centrifuge to remove any insoluble material.
Storage	Maintain the lyophilised/reconstituted antibodies frozen at -20°C for long term storage and refrigerated at 2-8°C for a shorter term. When reconstituting, glycerol (1:1) may be added for an additional stability. Avoid freeze and thaw cycles.
Expiry Date	12 months after reconstitution
Shipping	This item will be shipped to you at ambient temperature in a lyophilised form.
Limitation	For research use only



IHC-P on paraffin sections of rat DRG. The animal was perfused using Autoperfuser at a pressure of 110 mmHg with 300 ml 4% FA and further post fixed overnight before being processed for paraffin embedding. HIER: Tris-EDTA, pH 9 for 20 min using Thermo PT Module. Blocking: 0.2% LFDM in TBST filtered thru 0.2 µm. Detection was done using Novolink HRP polymer from Leica following manufacturers instructions. Primary antibody: dilution 1: 1000, incubated 30 min at RT (using Autostainer). Sections were counterstained with Harris Hematoxylin.

Related Products

OSA00065G Rabbit antibody to extracellular ASIC1 (100-150)