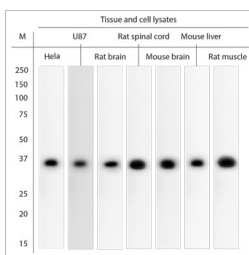


Rabbit antibody to GAPDH

Code	OSG00032W
ID Tag	Rb659-060908-WS
Unit size	150 ul
Immunogen	A synthetic peptide from rat GAPDH conjugated to blue carrier protein was used as the antigen. The antigen is homologous in mouse and shares 90% identity with human sequence.
Conjugate	Unconjugated antibody
Also known	38 kDa BFA dependent ADP ribosylation substrate, BARS-38, Glyceraldehyde-3-phosphate dehydrogenase
Host	NZ white rabbit
Purity	Whole serum
Clonality	Polyclonal
Isotype	Polyclonal, whole serum
Applications	WB. A dilution of 1 : 2000 is recommended. The optimal dilution should be determined by the end user. Not yet tested in other applications.
Specificity	Specific for GAPDH.
Spcs X-react.	Rat, mouse, human, marmoset. Other species not yet tested.
Format	Lyophilised. This product contains 0.02% benzalkonium chloride.
Reconstitution	Reconstitute in 150 ul of sterile water. Centrifuge to remove any insoluble material.
Storage	Maintain the lyophilised/reconstituted antibodies frozen at -20C for long term storage and refrigerated at 2-8C for a shorter term. When reconstituting, glycerol (1:1) may be added for an additional stability. Avoid freeze and thaw cycles.
Expiry Date	12 months after reconstitution
Shipping	This item will be shipped to you at ambient temperature in a lyophilised form.
Limitation	For research use only



WB on different cell lysates. Blocking: 1% LFDM for 30 min at RT; primary antibody: dilution 1:2000 incubated at 4C overnight. Click on eLAB BOOK tab to see the details.

Related Products

OSG00033G	Rabbit antibody to GAPDH
OSG00107W	Guinea pig antibody to GAPDH