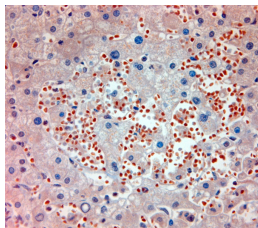


Rabbit antibody to MPR 300

Code	OSI00001W
ID Tag	Rb1440-250410-WS
Unit size	100 µl
Immunogen	A synthetic peptide from human MPR 300 conjugated to blue carrier protein was used as the antigen. The peptide is homologous in rat and mouse.
Conjugate	Unconjugated antibody
Also known	CI Man-6-P receptor, CI-MPR, M6PR, Insulin-like growth factor 2 receptor, Insulin-like growth factor II receptor, IGF-II receptor, M6P/IGF2 receptor, M6P/IGF2R, 300 kDa mannose 6-phosphate receptor, MPR 300, CD222 antigen, IGF2R, MPRI
Host	NZ white rabbit
Purity	Whole serum
Clonality	Polyclonal
Isotype	Polyclonal, whole serum
Applications	IHC, WB. A dilution of 1: 300 to 1: 2000 is recommended. The optimal dilution should be determined by the end user. Not yet tested in other applications.
Specificity	Specific for MPRI.
Spcs X-react.	Human, mouse, rat. Not yet tested in other species.
Format	Lyophilised
Reconstitution	Reconstitute in 100 µl of sterile water. Centrifuge to remove any insoluble material.
Storage	Maintain the lyophilised/reconstituted antibodies frozen at -20°C for long term storage and refrigerated at 2-8°C for a shorter term. When reconstituting, glycerol (1:1) may be added for an additional stability. Avoid freeze and thaw cycles.
Expiry Date	12 months after reconstitution
Shipping	This item will be shipped to you at ambient temperature in a lyophilised form.
Limitation	For research use only



IHC-P on paraffin sections of human liver.
 HIER: Tris-EDTA, pH 9 for 20 min using Thermo PT Module.
 Blocking: 0.2% LFDM in TBST filtered thru 0.2 µm.
 Detection was done using Novolink HRP polymer from Leica following manufacturers instructions.
 Primary antibody: dilution 1: 1000, incubated 30 min at RT (using Autostainer).
 Sections were counterstained with Harris Hematoxylin.