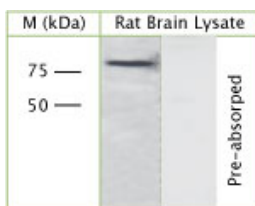


Rabbit antibody to GGA3

Code	OSG00029W
ID Tag	Rb684-060908-WS
Unit size	100 µl
Immunogen	A synthetic peptide from the VHS domain of human GGA3 conjugated to an immunogenic carrier protein was used as the antigen. peptide is homologous in rat and mouse.
Conjugate	Unconjugated antibody
Also known	ADP-ribosylation factor-binding protein GGA3; Golgi-localized, gamma ear-containing, ARF-binding protein 3; Gamma-adaptin-related protein 3
Host	NZ white rabbit
Purity	Whole serum
Clonality	Polyclonal
Isotype	Polyclonal, whole serum
Applications	IHC, WB. A dilution of 1 : 300 to 1 : 2000 is recommended. The optimal dilution should be determined by the end user. Not tested in other applications.
Specificity	Specific for GGA3.
Spcs X-react.	Mouse, rat, human. Other species not yet tested.
Format	Lyophilised
Reconstitution	Reconstitute in 100 µl of sterile water. Centrifuge to remove any insoluble material.
Storage	Maintain the lyophilised/reconstituted antibodies frozen at -20°C for long term storage and refrigerated at 2-8°C for a shorter term. When reconstituting, glycerol (1:1) may be added for an additional stability. Avoid freeze and thaw cycles.
Expiry Date	12 months after reconstitution
Shipping	This item will be shipped to you at ambient temperature in a lyophilised form.
Limitation	For research use only



WB on rat brain lysate using Rabbit antibody to GGA3 (OSG00029W) at 1 : 1000 dilution. Pre-absorption of the antibody with the immunising peptide completely abolishes the detected band.

Related Products

OSG00038G Rabbit antibody to GGA3
