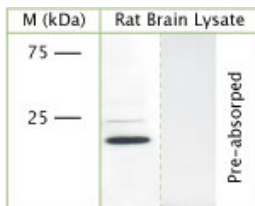


Rabbit antibody to CAV1 (30-80)

Code	OSC00056W
ID Tag	Rb667-060908-WS
Unit size	150 µl
Immunogen	A synthetic peptide from aa region 30-80 of human Caveolin 1 conjugated to blue carrier protein was used as the antigen. The antigen is homologous in many other species including rat, mouse.
Conjugate	Unconjugated antibody
Also known	CAV1, CAV
Host	NZ white rabbit
Purity	Whole serum
Clonality	Polyclonal
Isotype	Polyclonal, whole serum
Applications	IHC, WB. A dilution of 1 : 300 to 1 : 2000 is recommended. The optimal dilution should be determined by the end user. Not tested in other applications.
Specificity	Specific for Caveolin-1.
Spcs X-react.	Mouse, rat, human. Other species not yet tested.
Format	Lyophilised
Reconstitution	Reconstitute in 150 µl of sterile water. Centrifuge to remove any insoluble material.
Storage	Maintain the lyophilised/reconstituted antibodies frozen at -20°C for long term storage and refrigerated at 2-8°C for a shorter term. When reconstituting, glycerol (1:1) may be added for an additional stability. Avoid freeze and thaw cycles.
Expiry Date	12 months after reconstitution
Shipping	This item will be shipped to you at ambient temperature in a lyophilised form.
Limitation	For research use only



WB on rat brain lysate using Rabbit antibody to CAV1 (OSC00056W) at 1 : 1000 dilution. Pre-absorption of the antibody with the immunising peptide completely abolishes the detected band.

Related Products

OSC00057G Rabbit antibody to CAV1 (30-80)