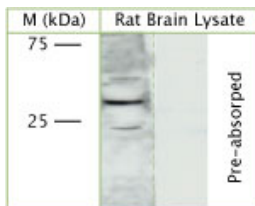


Rabbit antibody to SNF8

Code	OSV00023W
ID Tag	Rb691-060908-WS
Unit size	100 µl
Immunogen	A synthetic peptide from the internal region of human SNF8 conjugated to an immunogenic carrier protein was used as the antigen. The antigen is homologous in rat, mouse and xenopus.
Conjugate	Unconjugated antibody
Also known	EAP30, SNF8, ELL-associated protein of 30 kDa, ESCRT-II complex subunit VPS22
Host	NZ white rabbit
Purity	Whole serum
Clonality	Polyclonal
Isotype	Polyclonal, whole serum
Applications	IHC, WB. A dilution of 1 : 300 to 1 : 2000 is recommended. The optimal dilution should be determined by the end user. Not yet tested in other applications.
Specificity	Specific for SNF8.
Spcs X-react.	Mouse, rat, human. Other species not yet tested.
Format	Lyophilised
Reconstitution	Reconstitute in 100 µl of sterile water. Centrifuge to remove any insoluble material.
Storage	Maintain the lyophilised/reconstituted antibodies frozen at -20°C for long term storage and refrigerated at 2-8°C for a shorter term. When reconstituting, glycerol (1:1) may be added for an additional stability. Avoid freeze and thaw cycles.
Expiry Date	12 months after reconstitution
Shipping	This item will be shipped to you at ambient temperature in a lyophilised form.
Limitation	For research use only



WB on rat brain lysate using Rabbit antibody to SNF8 (OSV00023W) at 1 : 1000 dilution. Pre-absorption of the antibody with the immunising peptide completely abolishes the detected band.

Related Products

OSV00024G	Rabbit antibody to SNF8
OSV00050W	Sheep antibody to SNF8