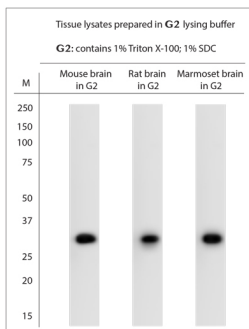


Rabbit antibody to M6PR

Code	OSM00057W
ID Tag	Rb660-060908-WS
Unit size	100 µl
Immunogen	A synthetic peptide from mouse M6PR conjugated to blue carrier protein was used as the antigen.
Conjugate	Unconjugated antibody
Also known	CD Man-6-P receptor, CD-MPR, 46 kDa mannose 6-phosphate receptor, MPR 46, Cation-dependent mannose-6-phosphate receptor, M6pr, 46mpr
Host	NZ white rabbit
Purity	Whole serum
Clonality	Polyclonal
Isotype	Polyclonal, whole serum
Applications	IHC, WB. A dilution of 1 : 3000 is recommended. The optimal dilution should be determined by the end user. Not yet tested in other applications.
Specificity	Specific for M6PR.
Spcs X-react.	Mouse, rat, human, marmoset. Other species not yet tested.
Format	Lyophilised
Reconstitution	Reconstitute in 100 µl of sterile water. Centrifuge to remove any insoluble material.
Storage	Maintain the lyophilised/reconstituted antibodies frozen at -20°C for long term storage and refrigerated at 2-8°C for a shorter term. When reconstituting, glycerol (1:1) may be added for an additional stability. Avoid freeze and thaw cycles.
Expiry Date	12 months after reconstitution
Shipping	This item will be shipped to you at ambient temperature in a lyophilised form.
Limitation	For research use only



WB on tissue lysates. Blocking: 1% LFDM for 30 min at RT; primary antibody: dilution 1:3000 incubated at 4°C overnight. Click on [eLAB BOOK](#) tab to see the details.

Related Products

OSM00062G Rabbit antibody to M6PR