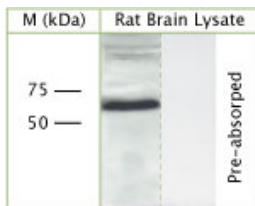


## Rabbit antibody to CHMP6

|                       |   |
|-----------------------|---|
| <b>Code</b>           | OSC00049W   |
| <b>ID Tag</b>         | Rb653-060908-WS   |
| <b>Unit size</b>      | 100 ul  |
| <b>Immunogen</b>      | A synthetic peptide from the c-terminal region of mouse CHMP6 conjugated to an antigen carrier protein was used as the antigen. The antigen shares 95% identity with rat's.   |
| <b>Conjugate</b>      | Unconjugated antibody   |
| <b>Also known</b>     | Charged multivesicular body protein 6, Chromatin-modifying protein 6  |
| <b>Host</b>           | NZ white rabbit   |
| <b>Purity</b>         | Whole serum   |
| <b>Clonality</b>      | Polyclonal  |
| <b>Isotype</b>        | Polyclonal, whole serum   |
| <b>Applications</b>   | IHC, WB. A dilution of 1 : 300 to 1 : 2000 is recommended. The optimal dilution should be determined by the end user. Not yet tested in other applications.   |
| <b>Specificity</b>    | Specific for CHMP6.   |
| <b>Spcs X-react.</b>  | Mouse, rat. Other species not yet tested.   |
| <b>Format</b>         | Lyophilised   |
| <b>Reconstitution</b> | Reconstitute in 100 ul of sterile water. Centrifuge to remove any insoluble material.   |
| <b>Storage</b>        | Maintain the lyophilised/reconstituted antibodies frozen at -20C for long term storage and refrigerated at 2-8C for a shorter term. When reconstituting, glycerol (1:1) may be added for an additional stability. Avoid freeze and thaw cycles. |
| <b>Expiry Date</b>    | 12 months after reconstitution  |
| <b>Shipping</b>       | This item will be shipped to you at ambient temperature in a lyophilised form.  |
| <b>Limitation</b>     | For research use only   |



WB on rat brain lysate under reducing/denatured conditions using Rabbit antibody to CHMP6 (OSC00049W) at 1 : 1000 dilution. Absorption of the antibody with the immunising peptide completely abolishes the detected band. Note: the expected MW is 23.5 kD however, a band of ~70 kD is detected. This might be due to CHMP6 being a component of a bigger complex.

---

### Related Products

OSC00121G Rabbit antibody to CHMP6

---