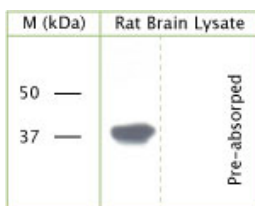


## Sheep antibody to phospho S41 GAP 43

<b>Code</b>	OSG00025W
<b>ID Tag</b>	Sh99-060908-WS
<b>Unit size</b>	100 µl
<b>Immunogen</b>	A synthetic peptide to phospho S41 of human Axonal membrane protein GAP-43 conjugated to an immunogenic carrier protein was used as the antigen. The peptide is homologous in rat, mouse, zebra fish and chicken.
<b>Conjugate</b>	Unconjugated antibody
<b>Also known</b>	Neuromodulin, growth-associated protein 43, protein F1, Basp2, B-50
<b>Host</b>	Sheep
<b>Purity</b>	Whole serum
<b>Clonality</b>	Polyclonal
<b>Isotype</b>	Polyclonal, whole serum
<b>Applications</b>	IHC. A dilution of 1 : 300 to 1 : 2000 is recommended. The optimal dilution should be determined by the end user. Not yet tested in other applications. This antibody may also recognise the unphosphorylated form.
<b>Specificity</b>	Specific for GAP-43.
<b>Spcs X-react.</b>	Human, rat, mouse. Other species not yet tested.
<b>Format</b>	Lyophilised
<b>Reconstitution</b>	Reconstitute in 100 µl of sterile water. Centrifuge to remove any insoluble material.
<b>Storage</b>	Maintain the lyophilised/reconstituted antibodies frozen at -20°C for long term storage and refrigerated at 2-8°C for a shorter term. When reconstituting, glycerol (1:1) may be added for an additional stability. Avoid freeze and thaw cycles.
<b>Expiry Date</b>	12 months after reconstitution
<b>Shipping</b>	This item will be shipped to you at ambient temperature in a lyophilised form.
<b>Limitation</b>	For research use only



WB on rat brain lysate using Sheep antibody to phospho S41 GAP 43 (OSG00025W) at 1 : 1000 dilution incubated overnight at 4°C. Pre-absorption of the antibody with the immunising peptide completely abolishes the detected band.

---

### Related Products

OSG00026G Sheep antibody to phospho S41 GAP 43