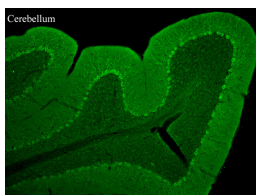


Rabbit antibody to TRPC3

Code	OST00198W
ID Tag	Rb619-170808-WS
Unit size	100 µl
Immunogen	A synthetic peptide from rat TRPC3 conjugated to blue carrier protein was used as the antigen. The peptide is homologous in mouse and human.
Conjugate	Unconjugated antibody
Also known	Short transient receptor potential channel 3, transient receptor potential cation channel, subfamily C, member 3
Host	NZ white rabbit
Purity	Whole serum
Clonality	Polyclonal
Isotype	Polyclonal, whole serum
Applications	IHC, WB. A dilution of 1 : 1000 is recommended for WB and 1:500 for IF. The optimal dilution should be determined by the end user.
Specificity	Specific for TRPC3.
Spes X-react.	Rat, mouse, human, marmoset. Other species not yet tested.
Format	Lyophilised
Reconstitution	Reconstitute in 100 µl of sterile water. Centrifuge to remove any insoluble material.
Storage	Maintain the lyophilised/reconstituted antibodies frozen at -20°C for long term storage and refrigerated at 2-8°C for a shorter term. When reconstituting, glycerol (1:1) may be added for an additional stability. Avoid freeze and thaw cycles.
Expiry Date	12 months after reconstitution
Shipping	This item will be shipped to you at ambient temperature in a lyophilised form.
Limitation	For research use only



IF on frozen sections of mouse brain. Primary antibody dilution 1: 500.