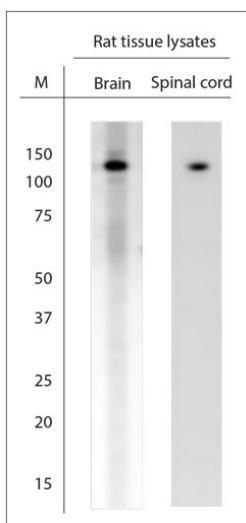


Rabbit antibody to TRPC6 (10-60)

Code	OST00197W
ID Tag	Rb618-170808-WS
Unit size	100 µl
Immunogen	A synthetic peptide from aa region 10-60 of rat TRPC6 conjugated to blue carrier protein was used as the antigen. The antigen is homologous with the corresponding sequence in mouse.
Conjugate	Unconjugated antibody
Also known	Short transient receptor potential channel 6, TrpC6, Calcium entry channel, Trp6, transient receptor potential cation channel, subfamily C, member 6, Trrp6, mtrp6
Host	NZ white rabbit
Purity	Whole serum
Clonality	Polyclonal
Isotype	Polyclonal, whole serum
Applications	WB. A dilution of 1: 4000 is recommended. The optimal dilution should be determined by the end user. Not yet tested in other applications.
Specificity	Specific for TRPC6.
Spcls X-react.	Mouse, rat, human, marmoset. Other species not yet tested.
Format	Lyophilised
Reconstitution	Reconstitute in 100 µl of sterile water. Centrifuge to remove any insoluble material.
Storage	Maintain the lyophilised/reconstituted antibodies frozen at -20°C for long term storage and refrigerated at 2-8°C for a shorter term. When reconstituting, glycerol (1:1) may be added for an additional stability. Avoid freeze and thaw cycles.
Expiry Date	12 months after reconstitution
Shipping	This item will be shipped to you at ambient temperature in a lyophilised form.
Limitation	For research use only



WB on rat tissue lysates. Blocking: 1% LFDM for 30 min at RT; primary antibody: dilution 1:4000 incubated at 4°C overnight. Click on eLAB BOOK tab to see the details.

Related Products

OST00276G Rabbit antibody to TRPC6 (10-60)