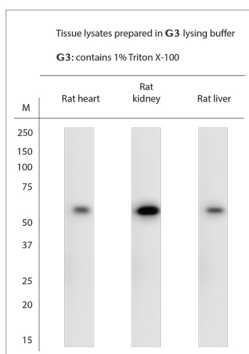


Rabbit antibody to Beclin1

Code	OSB00020W
ID Tag	Rb3148-241117-WS
Unit size	100 µl
Immunogen	A synthetic peptide from human Beclin1 conjugated to blue carrier protein has been used as the antigen. The peptide is homologous in rat and mouse.
Conjugate	Unconjugated antibody
Also known	Beclin-1, BECN1, GT197, ATG6, VPS30, beclin1
Host	NZ white rabbit
Purity	Whole serum
Clonality	Polyclonal
Isotype	Polyclonal, whole serum
Applications	IHC, WB. Use at a dilution of 1 : 2000. The optimal dilution should be determined by the end user. Not yet tested in other applications.
Specificity	Specific for Beclin-1.
Spcs X-react.	Human, mouse, rat, marmoset. Other species not yet tested.
Format	Lyophilised
Reconstitution	Reconstitute in 100 µl of sterile water. Centrifuge to remove any insoluble material.
Storage	Maintain the lyophilised/reconstituted antibodies frozen at -20°C for long term storage and refrigerated at 2-8°C for a shorter term. When reconstituting, glycerol (1:1) may be added for an additional stability. Avoid freeze and thaw cycles.
Expiry Date	12 months after reconstitution
Shipping	This item will be shipped to you at ambient temperature in a lyophilised form.
Limitation	For research use only



WB on tissue lysates. Blocking: 1% LFDM for 30 min at RT; primary antibody: dilution 1:2000 incubated overnight at 4C. Click on eLAB BOOK tab to see the details.