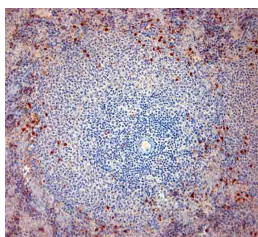


Rabbit antibody to mouse Cathelicidin

Code	OSC00043W
ID Tag	Rb4056-21052022-WS
Unit size	100 ul
Immunogen	A synthetic peptide from mouse Cathelicidin conjugated to blue carrier protein has been used as the antigen.
Conjugate	Unconjugated antibody
Also known	A synthetic peptide from mouse Cathelin related antimicrobial peptide (Cathelicidin, CAMP, CRAMP) conjugated to an immunogenic carrier protein has been used as the antigen.
Host	NZ white rabbit
Purity	Whole serum
Clonality	Polyclonal
Isotype	Polyclonal, whole serum
Applications	IHC, WB. Use at a dilution of 1:100 to 1: 2000. The optimal dilution should be determined by the end user. Not yet tested in other applications.
Specificity	Specific for Cathelin related antimicrobial peptide.
Spes X-react.	Mouse. Other species not yet tested.
Format	Lyophilised
Reconstitution	Reconstitute in 100 ul of sterile water. Centrifuge to remove any insoluble material.
Storage	Maintain the lyophilised/reconstituted antibodies frozen at -20C for long term storage and refrigerated at 2-8C for a shorter term. When reconstituting, glycerol (1:1) may be added for an additional stability. Avoid freeze and thaw cycles.
Expiry Date	12 months after reconstitution
Shipping	This item will be shipped to you at ambient temperature in a lyophilised form.
Limitation	For research use only



IHC-P on paraffin sections of mouse spleen.

The animal was perfused using Autoperfuser at a pressure of 130 mmHg with 300 ml 4% FA before being processed for paraffin embedding. HIER: Tris-EDTA, pH 9 for 20 min using Thermo PT Module.

Blocking: 0.2% LFD in TBST filtered thru 0.2 µm.

Detection was done using Novolink HRP polymer from Leica following manufacturers instructions; DAB chromogen: Candela DAB chromogen from Osenses.

Primary antibody: dilution 1: 1000, incubated 30 min at RT using Autostainer.

Sections were counterstained with Harris Hematoxylin.

Related Products

OSC00140G Rabbit antibody to mouse Cathelicidin