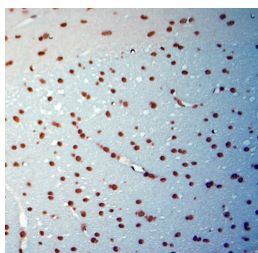


Rabbit antibody to cFos

Code	OSC00040W
ID Tag	Rb2500-140415-WS
Unit size	100 ul
Immunogen	A synthetic peptide from rat c Fos protein conjugated to blue carrier protein has been used as the antigen. The peptide is homologous in mouse and human.
Purity	Whole serum
Conjugate	Unconjugated antibody
Also known	Proto-oncogene protein cFOS, c-Fos
Host	NZ white rabbit
Purity	Whole serum
Clonality	Polyclonal antibody
Isotype	Polyclonal, whole serum
Applications	IHC, WB. Use at a dilution of 1 : 1000 for IHC-P and 1 : 2000 for WB. The optimal dilution should be determined by the end user. IMPORTANT: The lysate must be prepared in Ripa buffer containing 1% Triton-X100; 1% SDS and 1% SDC.
Specificity	Specific for cFOS.
Spes X-react.	Rat, mouse, human. Other species not yet tested.
Format	Lyophilised
Reconstitution	Reconstitute in 100 ul of sterile water. Centrifuge to remove any insoluble material.
Storage	Maintain the lyophilised/reconstituted antibodies frozen at -20C for long term storage and refrigerated at 2-8C for a shorter term. When reconstituting, glycerol (1:1) may be added for an additional stability. Avoid freeze and thaw cycles.
Expiry Date	12 months after purchase
Shipping	This item will be shipped to you at ambient temperature in a lyophilised form.
Limitation	For research use only



IHC-P on paraffin sections of rat brain. The animal was perfused using Autoperfuser at a pressure of 130 mmHg with 300 ml 4% FA before being processed for paraffin embedding. HIER: Tris-EDTA, pH 9 for 20 min using Thermo PT Module. Blocking: 0.2% LFDM in TBST filtered thru 0.2 µm. Detection was done using Novolink HRP polymer from Leica following manufacturers instructions; DAB chromogen: Candela DAB chromogen from Osenses. Primary antibody: dilution 1: 1000, incubated 30 min at RT using Autostainer. Sections were counterstained with Harris Hematoxylin.

Related Products

OSR00004W	Rabbit antibody to cFos
OSC00183G	Rabbit antibody to c Fos