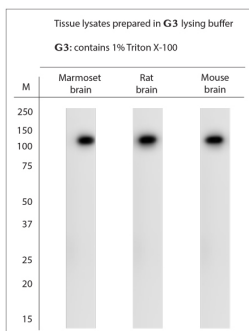


## Rabbit antibody to TRPA1

<b>Code</b>	OST00061W
<b>ID Tag</b>	Rb432-150608-WS
<b>Unit size</b>	100 ul
<b>Immunogen</b>	A synthetic peptide from rat TRPA1 conjugated to blue carrier protein was used as the antigen. The peptide is homologous in mouse.
<b>Conjugate</b>	Unconjugated antibody
<b>Also known</b>	Transient receptor potential cation channel subfamily A member 1, ankyrin-like with transmembrane domains protein 1, transformation sensitive protein p120, ANKTM1
<b>Host</b>	NZ white rabbit
<b>Purity</b>	Whole serum
<b>Clonality</b>	Polyclonal
<b>Isotype</b>	Polyclonal, whole serum
<b>Applications</b>	IHC, WB. A dilution of 1 : 1000 is recommended for WB and 1:2000 for IHC-P. The optimal dilution should be determined by the end user. Not yet tested in other applications. For WB, tissue lysates should be prepared in G3 lysing buffer (G3 lysing buffer contains only 1% Triton X-100 and no other detergents).
<b>Specificity</b>	Specific for TRPA1.
<b>Spcs X-react.</b>	Rat, mouse, human, marmoset. Other species not yet tested.
<b>Format</b>	Lyophilised. This product contains 0.02% benzalkonium chloride.
<b>Reconstitution</b>	Reconstitute in 100 ul of sterile water. Centrifuge to remove any insoluble material.
<b>Storage</b>	Maintain the lyophilised/reconstituted antibodies frozen at -20C for long term storage and refrigerated at 2-8C for a shorter term. When reconstituting, glycerol (1:1) may be added for an additional stability. Avoid freeze and thaw cycles.
<b>Expiry Date</b>	12 months after reconstitution
<b>Shipping</b>	This item will be shipped to you at ambient temperature in a lyophilised form.
<b>Limitation</b>	For research use only



WB on tissue lysates. Blocking: 1% LFDM for 30 min at RT; primary antibody: dilution 1:1000 incubated overnight at 4C. Click on eLAB BOOK tab to see the details.

### Related Products

OST00062G Rabbit antibody to TRPA1