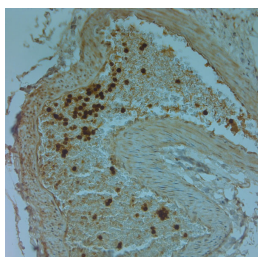


## Rabbit antibody to LL-37

<b>Code</b>	OSC00009W
<b>ID Tag</b>	Rb259-270108-WS
<b>Unit size</b>	150 ul
<b>Immunogen</b>	A synthetic peptide from human Cathelicidin conjugated to blue carrier protein has been used as the antigen.
<b>Conjugate</b>	Unconjugated antibody
<b>Also known</b>	CAMP, CAP18, FALL39, FALL-39, 18 kDa cationic antimicrobial protein, CAP-18, hCAP-18, LL37, CRAMP, HSD26
<b>Host</b>	NZ white rabbit
<b>Purity</b>	Whole serum
<b>Clonality</b>	Polyclonal
<b>Isotype</b>	Polyclonal, whole serum
<b>Applications</b>	IHC, WB. Use at a dilution of 1: 1000. The optimal dilution should be determined by the end user. Not yet tested in other applications.
<b>Specificity</b>	Specific for Cathelicidin antimicrobial peptide.
<b>Spcs X-react.</b>	Human, other species not yet tested.
<b>Format</b>	Lyophilised
<b>Reconstitution</b>	Reconstitute in 150 ul of sterile water. Centrifuge to remove any insoluble material.
<b>Storage</b>	Maintain the lyophilised/reconstituted antibodies frozen at -20C for long term storage and refrigerated at 2-8C for a shorter term. When reconstituting, glycerol (1:1) may be added for an additional stability. Avoid freeze and thaw cycles.
<b>Expiry Date</b>	12 months after reconstitution
<b>Shipping</b>	This item will be shipped to you at ambient temperature in a lyophilised form.
<b>Limitation</b>	For research use only



IHC on paraffin sections of human large intestine tissue using Rabbit antibody to LL-37: OSC00009W.

HIER: 1 mM EDTA, pH 8 for 20 min using Thermo PT Module.

Blocking: 0.2% LFDM in TBST filtered thru 0.2 µm.

Detection was done using Novolink HRP polymer from Leica following manufacturer's instructions.

Primary antibody: dilution 1: 1000, incubated 30 min at RT (using Autostainer)

Sections were counterstained with Harris Hematoxylin.