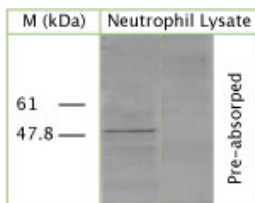


## Rabbit antibody to human, mouse cysteine protease ATG4B (autophagin-1, APG4B, AUTL1): whole serum

|                       |                                                                                                                                                                                                                                                   |
|-----------------------|---------------------------------------------------------------------------------------------------------------------------------------------------------------------------------------------------------------------------------------------------|
| <b>Code</b>           | OSA00033W                                                                                                                                                                                                                                         |
| <b>ID Tag</b>         | Rb270-270108-WS                                                                                                                                                                                                                                   |
| <b>Unit size</b>      | 150 µl                                                                                                                                                                                                                                            |
| <b>Immunogen</b>      | A synthetic peptide from human cysteine protease ATG4B (autophagin-1, APG4B, AUTL1) conjugated to an immunogenic carrier protein has been used as the immunogen. The antigen is homologous in mouse.                                              |
| <b>Conjugate</b>      | Unconjugated antibody                                                                                                                                                                                                                             |
| <b>Also known as</b>  | APG4B, AUTL1, hAPG4B, Autophagin-1, AUTL1, MGC1353, KIAA0943, cysteine protease ATG4B, hAPG4B, AUT-like 1 cysteine endopeptidase, Autophagy-related protein 4 homolog B                                                                           |
| <b>Host</b>           | NZ white rabbit                                                                                                                                                                                                                                   |
| <b>Purity</b>         | Whole serum                                                                                                                                                                                                                                       |
| <b>Clonality</b>      | Polyclonal                                                                                                                                                                                                                                        |
| <b>Isotype</b>        | Polyclonal, whole serum                                                                                                                                                                                                                           |
| <b>Applications</b>   | IHC, WB. Use at a dilution of 1 : 200 to 1 : 2000. The optimal dilution should be determined by the end user. Not yet tested in other applications.                                                                                               |
| <b>Specificity</b>    | Specific for ATG4B.                                                                                                                                                                                                                               |
| <b>Spcs X-react.</b>  | Human, mouse. Other species not yet tested.                                                                                                                                                                                                       |
| <b>Format</b>         | Lyophilised                                                                                                                                                                                                                                       |
| <b>Reconstitution</b> | Reconstitute in 150 µl of sterile water. Centrifuge to remove any insoluble material.                                                                                                                                                             |
| <b>Storage</b>        | Maintain the lyophilised/reconstituted antibodies frozen at -20°C for long term storage and refrigerated at 2-8°C for a shorter term. When reconstituting, glycerol (1:1) may be added for an additional stability. Avoid freeze and thaw cycles. |
| <b>Expiry Date</b>    | 12 months after reconstitution                                                                                                                                                                                                                    |
| <b>Transportation</b> | This item will be shipped to you at ambient temperature in a lyophilised form.                                                                                                                                                                    |
| <b>Limitation</b>     | For research use only                                                                                                                                                                                                                             |



WB on human neutrophil lysate using Rabbit antibody to human, mouse cysteine protease ATG4B (autophagin-1, APG4B, AUTL1): whole serum (OSA00033W) at a dilution of 1 : 100. Pre-absorption of the antibody with the immunising peptide completely abolishes the detected band.

---

### Associated Products

OSA00038W Sheep antibody to human, mouse cysteine protease ATG4B (autophagin-1, APG4B, AUTL1): whole serum