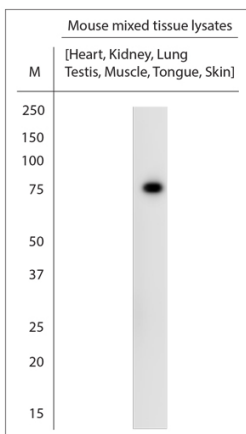


Rabbit antibody to ATG7

Code	OSA00019W
ID Tag	Rb286-270108-WS
Unit size	150 µl
Immunogen	A synthetic peptide from c-terminal region of human ATG7 conjugated to blue carrier protein has been used as the antigen. The peptide is homologous in rat and mouse.
Conjugate	Unconjugated antibody
Also known	APG7-like, APG7L, hAGP7, APG7L, ubiquitin-activating enzyme E1-like protein
Host	NZ white rabbit
Purity	Whole serum
Clonality	Polyclonal
Isotype	Polyclonal, whole serum
Applications	IHC, WB. Use at a dilution of 1 : 1000. The optimal dilution should be determined by the end user. Not yet tested in other applications.
Specificity	Specific for ATG7.
Spcs X-react.	Human, mouse and rat. Other species not yet tested.
Format	Lyophilised
Reconstitution	Reconstitute in 150 µl of sterile water. Centrifuge to remove any insoluble material.
Storage	Maintain the lyophilised/reconstituted antibodies frozen at -20°C for long term storage and refrigerated at 2-8°C for a shorter term. When reconstituting, glycerol (1:1) may be added for an additional stability. Avoid freeze and thaw cycles.
Expiry Date	12 months after reconstitution
Shipping	This item will be shipped to you at ambient temperature in a lyophilised form.
Limitation	For research use only



WB on mouse tissue lysates. Blocking: 1% LFDM for 30 min at RT; primary antibody: dilution 1:1000 incubated at 4°C overnight. Click on eLAB BOOK tab to see the details.