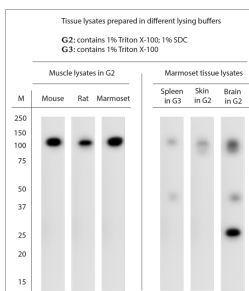


Rabbit antibody to TRPV2

Code	OSR00190W
ID Tag	Rb136-281007-WS
Unit size	100 ul
Immunogen	A synthetic peptide from human TRPV2 conjugated to blue carrier protein was used as the antigen.
Conjugate	Unconjugated antibody
Also known	Transient receptor potential cation channel subfamily V member 2, TrpV2, osm-9-like TRP channel 2, OTRPC2, vanilloid receptor-like protein, VRL, VRL1, VRL-1
Host	NZ white rabbit
Purity	Whole serum
Clonality	Polyclonal
Isotype	Polyclonal, whole serum
Applications	IHC, WB. A dilution of 1 : 1000 is recommended for WB and 1: 2000 for IHC-P. The optimal dilution should be determined by the end user. Not yet tested in other applications.
Specificity	Specific for TRPV2.
Spcls X-react.	Human, marmoset, rat, mouse. Other species not yet tested.
Format	Lyophilised
Reconstitution	Reconstitute in 100 ul of sterile water. Centrifuge to remove any insoluble material.
Storage	Maintain the lyophilised/reconstituted antibodies frozen at -20Â°C for long term storage and refrigerated at 2-8Â°C for a shorter term. When reconstituting, glycerol (1:1) may be added for an additional stability. Avoid freeze and thaw cycles.
Expiry Date	12 months after reconstitution
Shipping	This item will be shipped to you at ambient temperature in a lyophilised form.
Limitation	For research use only



WB on tissue lysates. Blocking: 1% LFDM for 30 min at RT; primary antibody dilutions: in Muscle 1:1000; in Brain, Spleen, Skin: 1:1000 incubated at 4C overnight. Click on eLAB BOOK tab to see the details.