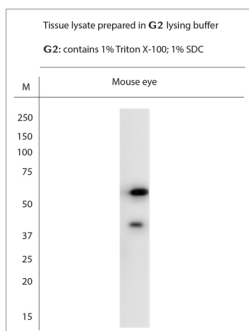


Rabbit antibody to OA1

Code	OSR00147W
ID Tag	Rb3138-241117-WS
Unit size	100 µl
Immunogen	A synthetic peptide from mouse OA1 conjugated to blue carrier protein was used as the antigen.
Conjugate	Unconjugated antibody
Also known	G-protein coupled receptor 143, ocular albinism type 1 protein homolog, MOA1, Gpr143, Oa1
Host	NZ white rabbit
Purity	Whole serum
Clonality	Polyclonal
Isotype	Polyclonal, whole serum
Applications	IHC, WB. A dilution of 1:2000 is recommended. The optimal dilution should be determined by the end user. Not yet tested in other applications.
Specificity	Specific for OA1.
Spcls X-react.	Mouse. Other species not yet tested.
Format	Lyophilised
Reconstitution	Reconstitute in 100 µl of sterile water. Centrifuge to remove any insoluble material.
Storage	Maintain the lyophilised/reconstituted antibodies frozen at -20°C for long term storage and refrigerated at 2-8°C for a shorter term. When reconstituting, glycerol (1:1) may be added for an additional stability. Avoid freeze and thaw cycles.
Expiry Date	12 months after reconstitution
Shipping	This item will be shipped to you at ambient temperature in a lyophilised form.
Limitation	For research use only



WB on tissue lysate. Blocking: 1% LFDM for 30 min at RT; primary antibody: dilution 1:1000 incubated overnight at 4°C. Click on eLAB BOOK tab to see the details.