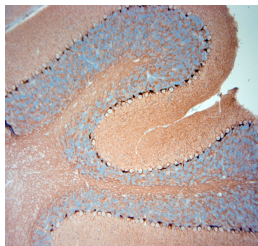


Rabbit antibody to HCN1

Code	OSR00123W
ID Tag	Rb2782-080616-WS
Unit size	100 ul
Immunogen	A synthetic peptide from human HCN1 conjugated to blue carrier protein was used as the antigen. The peptide is homologous in mouse and marmoset.
Conjugate	Unconjugated antibody
Also known	Brain cyclic nucleotide-gated channel 1, BCNG-1, BCNG1, HAC-2
Host	NZ white rabbit
Purity	Whole serum
Clonality	Polyclonal
Isotype	Polyclonal, whole serum
Applications	IHC, WB. A dilution of 1 : 500 to 1:1000 is recommended. The optimal dilution should be determined by the end user. Not yet tested in other applications.
Specificity	Specific for HCN1.
Spcs X-react.	Human, mouse, rat. Other species not yet tested.
Format	Lyophilised
Reconstitution	Reconstitute in 100 ul of sterile water. Centrifuge to remove any insoluble material.
Storage	Maintain the lyophilised/reconstituted antibodies frozen at -20C for long term storage and refrigerated at 2-8C for a shorter term. When reconstituting, glycerol (1:1) may be added for an additional stability. Avoid freeze and thaw cycles.
Expiry Date	12 months after reconstitution
Shipping	This item will be shipped to you at ambient temperature in a lyophilised form.
Limitation	For research use only



IHC-P on paraffin sections of mouse cerebellum.
 The animal was perfused using Autoperfuser at a pressure of 130 mmHg with 300 ml 4% FA being processed for paraffin embedding. HIER: Tris-EDTA, pH 9 for 20 min using Thermo PT Module.
 Blocking: 0.2% LFDM in TBST filtered thru 0.2 µm.
 Detection was done using Novolink HRP polymer from Leica following manufacturers instructions; DAB chromogen: Candela DAB chromogen from Osenses.
 Primary antibody: dilution 1: 500, incubated 30 min at RT using Autostainer.
 Sections were counterstained with Harris Hematoxylin.

Related Products

OSH00055W Guinea pig antibody to HCN1
