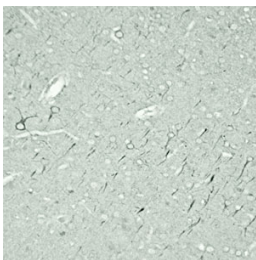


Rabbit antibody to TRPC4

Code	OSR00086W
ID Tag	Rb89-281007-WS
Unit size	100 µl
Immunogen	A synthetic peptide from human TRPC4 conjugated to an immunogenic carrier protein was used as the antigen. The peptide is homologous in many other species.
Conjugate	Unconjugated antibody
Also known	Short transient receptor potential channel 4, TrpC4, Trp4, Capacitative calcium entry channel 1, CCE1, Trrp4, Receptor-activated cation channel TRP4, Trp-related protein 4, hTrp-4, hTrp4
Host	NZ white rabbit
Purity	Whole serum
Clonality	Polyclonal
Isotype	Polyclonal, whole serum
Applications	IHC, WB (confirmed by recombinant protein). A dilution of 1: 300 to 1: 2000 is recommended. The optimal dilution should be determined by the end user. Not yet tested in other applications.
Specificity	Specific for TRPC4.
Spcs X-react.	Rat, mouse, human. Other species not yet tested.
Format	Lyophilised
Reconstitution	Reconstitute in 100 µl of sterile water. Centrifuge to remove any insoluble material.
Storage	Maintain the lyophilised/reconstituted antibodies frozen at -20°C for long term storage and refrigerated at 2-8°C for a shorter term. When reconstituting, glycerol (1:1) may be added for an additional stability. Avoid freeze and thaw cycles.
Expiry Date	12 months after reconstitution
Shipping	This item will be shipped to you at ambient temperature in a lyophilised form.
Limitation	For research use only



IHC on rat brain, paraffin sections using Rabbit antibody to TRPC4 (OSR00086W) at 1 : 500 dilution incubated overnight at 4C and developed with DAB/Ni.

Related Products

OST00025W Sheep antibody to TRPC4
