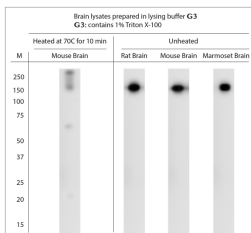


Rabbit antibody to Synaptojanin1

Code	OSS00431W
ID Tag	Rb2894-231116-WS
Unit size	100 Åµl
Immunogen	A synthetic peptide from human Synaptojanin1 conjugated to blue carrier protein was used as the antigen. The peptide is homologous in rat, mouse, marmoset.
Conjugate	Unconjugated antibody
Also known	SYNJ1, Synaptojanin-1, Synaptojanin 1, Synaptic inositol 1,4,5-trisphosphate 5-phosphatase 1
Host	NZ white rabbit
Purity	Whole serum
Clonality	Polyclonal
Isotype	Polyclonal, whole serum
Applications	IHC, WB. A dilution of 1 : 2000 is recommended for WB and 1:1000 for IHC-P. The optimal dilution should be determined by the end user. Not yet tested in other applications.
Specificity	Specific for Synaptojanin1.
Spcls X-react.	Human, rat, mouse, marmoset. Other species not yet tested.
Format	Lyophilised
Reconstitution	Reconstitute in 100 Åµl of sterile water. Centrifuge to remove any insoluble material.
Storage	Maintain the lyophilised/reconstituted antibodies frozen at -20Å°C for long term storage and refrigerated at 2-8Å°C for a shorter term. When reconstituting, glycerol (1:1) may be added for an additional stability. Avoid freeze and thaw cycles.
Expiry Date	12 months after reconstitution
Shipping	This item will be shipped to you at ambient temperature in a lyophilised form.
Limitation	For research use only



WB on brain lysates. Blocking: 1% LFDM for 30 min at RT; primary antibody: dilution 1:2000 incubated at 4C overnight. Click on eLAB BOOK tab to see the details.