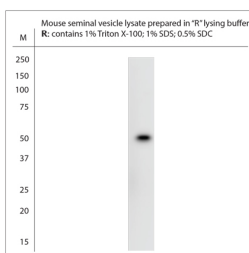


Rabbit antibody to NMBR

Code	OSN00110W
ID Tag	Rb2890-231116-WS
Unit size	100 µl
Immunogen	A synthetic peptide from mouse NMBR conjugated to blue carrier protein was used as the antigen. The peptide is homologous in rat and human and marmoset.
Conjugate	Unconjugated antibody
Also known	Neuromedin-B receptor, Neuromedin B receptor, NMB-R, NMB R, Neuromedin B preferring bombesin receptor
Host	NZ white rabbit
Purity	Whole serum
Clonality	Polyclonal
Isotype	Polyclonal, whole serum
Applications	IHC. A dilution of 1 : 500 is recommended. The optimal dilution should be determined by the end user. Not yet tested in other applications.
Specificity	Specific for NMBR.
Spes X-react.	Rat, mouse, human, marmoset. Other species not yet tested.
Format	Lyophilised
Reconstitution	Reconstitute in 100 µl of sterile water. Centrifuge to remove any insoluble material.
Storage	Maintain the lyophilised/reconstituted antibodies frozen at -20°C for long term storage and refrigerated at 2-8°C for a shorter term. When reconstituting, glycerol (1:1) may be added for an additional stability. Avoid freeze and thaw cycles.
Expiry Date	12 months after reconstitution
Shipping	This item will be shipped to you at ambient temperature in a lyophilised form.
Limitation	For research use only



WB on mouse tissue lysate. Blocking: 1% LFDM for 30 min at RT; primary antibody: dilution 1:500 incubated overnight at 4C. Click on eLAB BOOK tab to see the details.