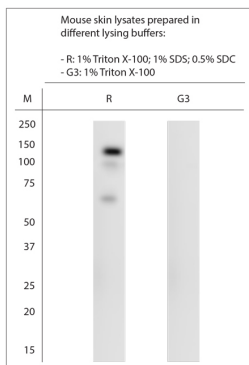


Rabbit antibody to TRPC2

| | |
|-----------------------|---|
| Code | OST00476W |
| ID Tag | Rb2842-090916-WS |
| Unit size | 100 µl |
| Immunogen | A synthetic peptide from mouse TRPC2 conjugated to blue carrier protein was used as the antigen. |
| Conjugate | Unconjugated antibody |
| Also known | Short transient receptor potential channel 2, mTrp2, Trp2, Trrp2, Trpc2, transient receptor potential cation channel, subfamily C, member 2, trp2, Trrp2, mTrp2, TRPC2a, TRPC2b, smTRPC2 |
| Host | NZ white rabbit |
| Purity | Whole serum |
| Clonality | Polyclonal |
| Isotype | Polyclonal, whole serum |
| Applications | IHC, WB. A dilution of 1: 1000 is recommended. Incubation time recommended: 2 days at 4C. The optimal dilution should be determined by the end user. Not yet tested in other applications. |
| Specificity | Specific for TRPC2. |
| Spcs X-react. | Mouse. Other species not yet tested. |
| Format | Lyophilised |
| Reconstitution | Reconstitute in 100 µl of sterile water. Centrifuge to remove any insoluble material. |
| Storage | Maintain the lyophilised/reconstituted antibodies frozen at -20°C for long term storage and refrigerated at 2-8°C for a shorter term. When reconstituting, glycerol (1:1) may be added for an additional stability. Avoid freeze and thaw cycles. |
| Expiry Date | 12 months after reconstitution |
| Shipping | This item will be shipped to you at ambient temperature in a lyophilised form. |
| Limitation | For research use only |



WB on mouse skin lysates. Blocking: 1% LFDM for 30 min at RT; primary antibody: dilution 1:1000 incubated 2 days at 4C. Click on eLAB BOOK tab to see the details.