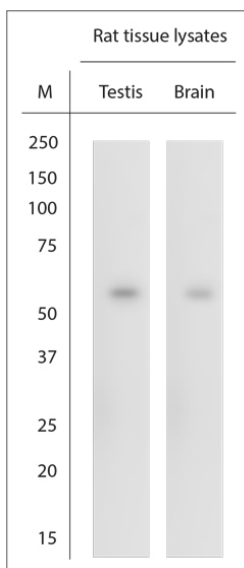


Rabbit antibody to SRF

Code	OSS00428W
ID Tag	Rb2673-250815-WS
Unit size	100 µl
Immunogen	A synthetic peptide from human SRF conjugated to blue carrier protein was used as the antigen. The peptide is homologous in rat and mouse.
Conjugate	Unconjugated antibody
Also known	Serum response factor
Host	NZ white rabbit
Purity	Whole serum
Clonality	Polyclonal
Isotype	Polyclonal, whole serum
Applications	IHC, WB. A dilution of 1:1000 is recommended. The optimal dilution should be determined by the end user. Not yet tested in other applications.
Specificity	Specific for SRF.
Spcs X-react.	Human, rat, mouse. Other species not yet tested.
Format	Lyophilised
Reconstitution	Reconstitute in 100 µl of sterile water. Centrifuge to remove any insoluble material.
Storage	Maintain the lyophilised/reconstituted antibodies frozen at -20°C for long term storage and refrigerated at 2-8°C for a shorter term. When reconstituting, glycerol (1:1) may be added for an additional stability. Avoid freeze and thaw cycles.
Expiry Date	12 months after reconstitution
Shipping	This item will be shipped to you at ambient temperature in a lyophilised form.
Limitation	For research use only



WB on rat tissue lysates. Blocking: 1% LFDM for 30 min at RT; primary antibody: dilution 1:1000 incubated at 4°C overnight. Click on [eLAB BOOK](#) tab to see the details.