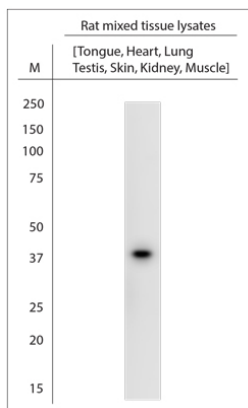


Rabbit antibody to CAHM1 (250-300)

Code	OSC00325W
ID Tag	Rb2600-230615-WS
Unit size	100 µl
Immunogen	A synthetic peptide from aa region 250-300 of mouse CAHM1 conjugated to blue carrier protein was used as the antigen. The antigen shares 97% identity with the rat sequence.
Conjugate	Unconjugated antibody
Also known	Calcium homeostasis modulator protein 1
Host	NZ white rabbit
Purity	Whole serum
Clonality	Polyclonal
Isotype	Polyclonal, whole serum
Applications	IHC, WB. A dilution of 1 : 1000 to 1 : 2000 is recommended. The optimal dilution should be determined by the end user. Not yet tested in other applications.
Specificity	Specific for CAHM1.
Spcs X-react.	Mouse, rat. Other species not yet tested.
Format	Lyophilised
Reconstitution	Reconstitute in 100 µl of sterile water. Centrifuge to remove any insoluble material.
Storage	Maintain the lyophilised/reconstituted antibodies frozen at -20°C for long term storage and refrigerated at 2-8°C for a shorter term. When reconstituting, glycerol (1:1) may be added for an additional stability. Avoid freeze and thaw cycles.
Expiry Date	12 months after reconstitution
Shipping	This item will be shipped to you at ambient temperature in a lyophilised form.
Limitation	For research use only



WB on rat tissue lysate. Blocking: 1% LFDM for 30 min at RT; primary antibody: dilution 1:1000 incubated at 4°C overnight. Click on [eLAB BOOK](#) tab to see the details.