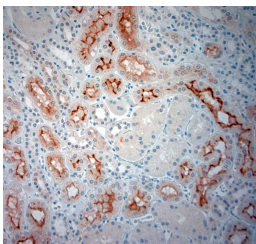


Rabbit antibody to SLC5A8 (560-610)

Code	OSS00401W
ID Tag	Rb2270-271213-WS
Unit size	100 µl
Immunogen	A synthetic peptide from aa region 560-610 of human SLC5A8 conjugated to blue carrier protein was used as the antigen.
Conjugate	Unconjugated antibody
Also known	Electrogenic sodium monocarboxylate cotransporter, Solute carrier family 5 member 8, SMCT1, SMCT, SLC5A8
Host	NZ white rabbit
Purity	Whole serum
Clonality	Polyclonal
Isotype	Polyclonal, whole serum
Applications	IHC, WB (confirmed by recombinant protein). A dilution of 1: 200 to 1: 2000 is recommended. The optimal dilution should be determined by the end user. Not yet tested in other applications.
Specificity	Specific for SLC5A8.
Spcs X-react.	Human. Other species not yet tested.
Format	Lyophilised
Reconstitution	Reconstitute in 100 µl of sterile water. Centrifuge to remove any insoluble material.
Storage	Maintain the lyophilised/reconstituted antibodies frozen at -20°C for long term storage and refrigerated at 2-8°C for a shorter term. When reconstituting, glycerol (1:1) may be added for an additional stability. Avoid freeze and thaw cycles.
Expiry Date	12 months after reconstitution
Shipping	This item will be shipped to you at ambient temperature in a lyophilised form.
Limitation	For research use only



IHC-P on paraffin sections of human kidney. HIER: Tris-EDTA, pH 9 for 20 min using Thermo PT Module. Blocking: 0.2% LFDM in TBST filtered thru 0.2 µm. Detection was done using Novolink HRP polymer from Leica following manufacturers instructions. Primary antibody: dilution 1: 1000, incubated 30 min at RT using Autostainer. Sections were counterstained with Harris Hematoxylin.

Related Products

OSS00256W Rabbit antibody to SLC5A8
