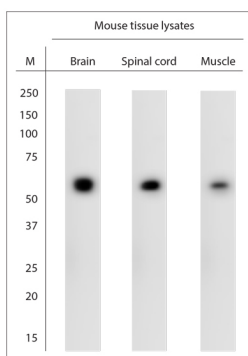


Rabbit antibody to Atlastin 2

Code	OSA00245W
ID Tag	Rb2228-201113-WS
Unit size	100 µl
Immunogen	A synthetic peptide from aa region 530-583 of human Atlastin-2 conjugated to blue carrier protein was used as the antigen. The peptide is homologous in mouse and rat.
Conjugate	Unconjugated antibody
Also known	ADP-ribosylation factor-like protein 6-interacting protein 2, ARL-6-interacting protein 2, Aip-2, ATL2, ARL6IP2
Host	NZ white rabbit
Purity	Whole serum
Clonality	Polyclonal
Isotype	Polyclonal, whole serum
Applications	IHC, WB. A dilution of 1: 2000 is recommended for WB and 1:1000 for IHC-P. The optimal dilution should be determined by the end user. Not yet tested in other applications.
Specificity	Specific for Atlastin-2.
Spcs X-react.	Human, mouse, rat. Other species not yet tested.
Format	Lyophilised
Reconstitution	Reconstitute in 100 µl of sterile water. Centrifuge to remove any insoluble material.
Storage	Maintain the lyophilised/reconstituted antibodies frozen at -20°C for long term storage and refrigerated at 2-8°C for a shorter term. When reconstituting, glycerol (1:1) may be added for an additional stability. Avoid freeze and thaw cycles.
Expiry Date	12 months after reconstitution
Shipping	This item will be shipped to you at ambient temperature in a lyophilised form.
Limitation	For research use only



WB on mouse tissue lysates. Blocking: 1% LFDM for 30 min at RT; primary antibody: dilution 1:2000 incubated at 4°C overnight. Click on eLAB BOOK tab to see the details. Lysate preparation: RIPA lysing buffer containing only 1% Triton x-100 is recommended.

Related Products

OSA00246W Rabbit antibody to Atlastin 2 (400-450)