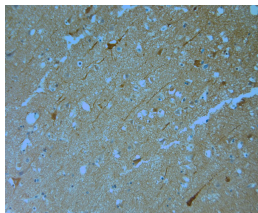


Rabbit antibody to MPP1 (410-460)

Code	OSM00117W
ID Tag	Rb2154-011013-WS
Unit size	100 µl
Immunogen	A synthetic peptide from aa region 410-460 of human MPP1 conjugated to an immunogenic carrier protein was used as the antigen. The peptide shares 98% identity with mouse sequence.
Conjugate	Unconjugated antibody
Also known	55 kDa erythrocyte membrane protein, p55, palmitoylated 1 Membrane protein, EMP55
Host	NZ white rabbit
Purity	Whole serum
Clonality	Polyclonal
Isotype	Polyclonal, whole serum
Applications	IHC, WB. A dilution of 1: 300 to 1: 2000 is recommended. The optimal dilution should be determined by the end user. Not yet tested in other applications.
Specificity	Specific for MPP1.
Spcs X-react.	Human, mouse. Other species not yet tested.
Format	Lyophilised
Reconstitution	Reconstitute in 100 µl of sterile water. Centrifuge to remove any insoluble material.
Storage	Maintain the lyophilised/reconstituted antibodies frozen at -20°C for long term storage and refrigerated at 2-8°C for a shorter term. When reconstituting, glycerol (1:1) may be added for an additional stability. Avoid freeze and thaw cycles.
Expiry Date	12 months after reconstitution
Shipping	This item will be shipped to you at ambient temperature in a lyophilised form.
Limitation	For research use only



IHC-P on paraffin sections of human brain.
 HIER: Tris-EDTA, pH 9 for 20 min using Thermo PT Module.
 Blocking: 0.2% LFDM in TBST filtered thru 0.2 µm.
 Detection was done using Novolink HRP polymer from Leica following manufacturers instructions.
 Primary antibody: dilution 1: 1000, incubated 30 min at RT (using Autostainer).
 Sections were counterstained with Harris Hematoxylin.