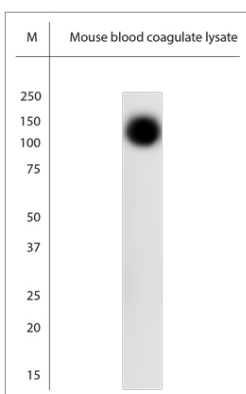


Rabbit antibody to SLC4A1

Code	OSS00285W
ID Tag	Rb1528-130810-WS
Unit size	100 µl
Immunogen	A synthetic peptide from human Band 3 anion transport protein (SLC4A1, CD233) conjugated to blue carrier protein was used as the antigen. The peptide is homologous in rat and mouse.
Conjugate	Unconjugated antibody
Also known	Anion exchange protein 1, AE 1, Anion exchanger 1, Solute carrier family 4 member 1, CD233, SLC4A1, AE1, DI, EPB3
Host	NZ white rabbit
Purity	Whole serum
Clonality	Polyclonal
Isotype	Polyclonal, whole serum
Applications	IHC, WB. A dilution of 1: 30000 to 1:100000 is recommended for WB and 1:2000 for IHC-P. The optimal dilution should be determined by the end user. Not yet tested in other applications.
Specificity	Specific for SLC4A1.
Spcs X-react.	Human, mouse, rat. Other species not yet tested.
Format	Lyophilised
Reconstitution	Reconstitute in 100 µl of sterile water. Centrifuge to remove any insoluble material.
Storage	Maintain the lyophilised/reconstituted antibodies frozen at -20°C for long term storage and refrigerated at 2-8°C for a shorter term. When reconstituting, glycerol (1:1) may be added for an additional stability. Avoid freeze and thaw cycles.
Expiry Date	12 months after reconstitution
Shipping	This item will be shipped to you at ambient temperature in a lyophilised form.
Limitation	For research use only



WB on mouse blood coagulate lysate. Blocking: 1% LFDM for 30 min at RT; primary antibody: dilution 1:30000 incubated at 4°C overnight. Click on [eLAB](#) [BOOK](#) tab to see the details.

Related Products

OSB00090W Rabbit antibody to mouse SLC4A1