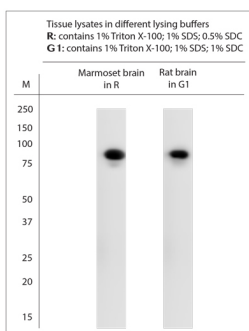


## Rabbit antibody to PSD95

<b>Code</b>	OSD00037W
<b>ID Tag</b>	Rb1571-120910-WS
<b>Unit size</b>	100 ul
<b>Immunogen</b>	A synthetic peptide from n-terminal region of human PSD95 conjugated to blue carrier protein was used as the antigen. The peptide is homologous in rat and mouse.
<b>Conjugate</b>	Unconjugated antibody
<b>Also known</b>	Disks large homolog 4, Postsynaptic density protein 95, PSD-95, Synapse-associated protein 90, SAP-90, SAP90, DLG4
<b>Host</b>	NZ white rabbit
<b>Purity</b>	Whole serum
<b>Clonality</b>	Polyclonal
<b>Isotype</b>	Polyclonal, whole serum
<b>Applications</b>	IHC, WB. A dilution of 1: 1000 to 1:2000 is recommended. The optimal dilution should be determined by the end user. Not yet tested in other applications.
<b>Specificity</b>	Specific for PSD95.
<b>Spes X-react.</b>	Human, marmoset, rat, mouse. Other species not yet tested.
<b>Format</b>	Lyophilised. This product contains 0.02% benzalkonium chloride.
<b>Reconstitution</b>	Reconstitute in 100 ul of sterile water. Centrifuge to remove any insoluble material.
<b>Storage</b>	Maintain the lyophilised/reconstituted antibodies frozen at -20C for long term storage and refrigerated at 2-8C for a shorter term. When reconstituting, glycerol (1:1) may be added for an additional stability. Avoid freeze and thaw cycles.
<b>Expiry Date</b>	12 months after reconstitution
<b>Shipping</b>	This item will be shipped to you at ambient temperature in a lyophilised form.
<b>Limitation</b>	For research use only



WB on brain lysates prepared in different lysing buffers. Blocking: 1% LFDM for 30 min at RT; primary antibody dilution 1:2000 incubated at 4C overnight. Click on eLAB BOOK tab to see the details.