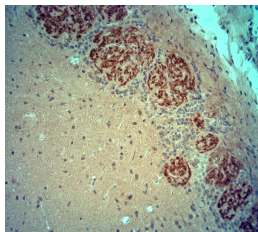


Rabbit antibody to VGLuT2

Code	OSV00087W
ID Tag	Rb1564-120910-WS
Unit size	100 ul
Immunogen	A synthetic peptide from rat VGLuT2 conjugated to blue carrier protein was used as the antigen. The peptide is homologous in mouse and shares 95% identity with human sequence.
Conjugate	Unconjugated antibody
Also known	Vesicular glutamate transporter 2, VGLU2, Solute carrier family 17 member 6, Differentiation-associated Na(+)-dependent inorganic phosphate cotransporter, Differentiation-associated BNPI, Slc17a6, Dnpi
Host	NZ white rabbit
Purity	Whole serum
Clonality	Polyclonal
Isotype	Polyclonal, whole serum
Applications	IHC, WB. A dilution of 1: 1000 is recommended. The optimal dilution should be determined by the end user. Not yet tested in other applications.
Specificity	Specific for VGLUT2.
Spcs X-react.	Rat, mouse. Other species not yet tested but expected to work in human.
Format	Lyophilised
Reconstitution	Reconstitute in 100 ul of sterile water. Centrifuge to remove any insoluble material.
Storage	Maintain the lyophilised/reconstituted antibodies frozen at -20C for long term storage and refrigerated at 2-8C for a shorter term. When reconstituting, glycerol (1:1) may be added for an additional stability. Avoid freeze and thaw cycles.
Expiry Date	12 months after reconstitution
Shipping	This item will be shipped to you at ambient temperature in a lyophilised form.
Limitation	For research use only



IHC-P on paraffin sections of rat olfactory bulbs.
The animal was perfused using Autoperfuser at a pressure of 130 mmHg with 300 ml 4% FA before being processed for paraffin embedding. HIER: Tris-EDTA, pH 9 for 20 min using Thermo PT Module.
Blocking: 0.2% LFDM in TBST filtered thru 0.2 µm.
Detection was done using Novolink HRP polymer from Leica following manufacturers instructions; DAB chromogen: Candela DAB chromogen from Osenses.
Primary antibody: dilution 1: 1000, incubated 30 min at RT using Autostainer.
Sections were counterstained with Harris Hematoxylin.

Related Products

OSV00108W Guinea pig antibody to VGLuT2