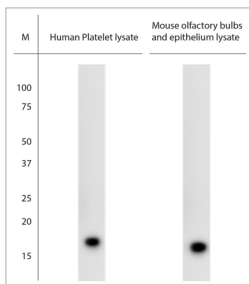


Rabbit antibody to SOD1 (40-90)

Code	OSS00206W
ID Tag	Rb1184-260909-WS
Unit size	150 µl
Immunogen	A synthetic peptide from aa region 40-90 of human SOD1 conjugated to blue carrier protein was used as the antigen. The antigen is homologous in rat and mouse.
Conjugate	Unconjugated antibody
Also known	SOD1, Superoxide dismutase 1, SODC
Host	NZ white rabbit
Purity	Whole serum
Clonality	Polyclonal
Isotype	Polyclonal, whole serum
Applications	IHC, WB. A dilution of 1: 3000 is recommended for WB and to 1: 1000 for IHC-P. The optimal dilution should be determined by the end user. Not yet tested in other applications.
Specificity	Specific for SOD1.
Spcs X-react.	Human. Other species not yet tested but expected to work in rat, mouse and guinea pig.
Format	Lyophilised
Reconstitution	Reconstitute in 150 µl of sterile water. Centrifuge to remove any insoluble material.
Storage	Maintain the lyophilised/reconstituted antibodies frozen at -20°C for long term storage and refrigerated at 2-8°C for a shorter term. When reconstituting, glycerol (1:1) may be added for an additional stability. Avoid freeze and thaw cycles.
Expiry Date	12 months after reconstitution
Shipping	This item will be shipped to you at ambient temperature in a lyophilised form.
Limitation	For research use only



WB on different lysates. Blocking: 1% LFDM for 30 min at RT; primary antibody: dilution 1:3000 incubated at 4°C overnight. Click on eLAB BOOK tab to see the details.