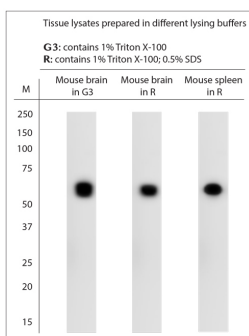


Rabbit antibody to 5HT1B R

Code	OSS00182W
ID Tag	Rb2938-010217-WS
Unit size	100 µl
Immunogen	A synthetic peptide from mouse 5HT1B receptor conjugated to blue carrier protein was used as the antigen.
Conjugate	Unconjugated antibody
Also known	5-hydroxytryptamine receptor 1B, 5-HT-1D-beta, 5-HT-1B, 5-HT1B, Serotonin receptor 1B, Serotonin 1D beta receptor, S12, HTR1B, HTR1DB
Host	NZ white rabbit
Purity	Whole serum
Clonality	Polyclonal
Isotype	Polyclonal, whole serum
Applications	IHC, WB. A dilution of 1: 2000 is recommended for WB and 1:1000 for IHC-P. The optimal dilution should be determined by the end user. Not yet tested in other applications.
Specificity	Specific for 5HT1B receptor.
Spcs X-react.	Mouse. Other species not yet tested but expected to work on human, marmoset and rat.
Format	Lyophilised
Reconstitution	Reconstitute in 100 µl of sterile water. Centrifuge to remove any insoluble material.
Storage	Maintain the lyophilised/reconstituted antibodies frozen at -20°C for long term storage and refrigerated at 2-8°C for a shorter term. When reconstituting, glycerol (1:1) may be added for an additional stability. Avoid freeze and thaw cycles.
Expiry Date	12 months after reconstitution
Shipping	This item will be shipped to you at ambient temperature in a lyophilised form.
Limitation	For research use only



WB on mouse tissue lysates. Blocking: 1% LFDM for 30 min at RT; primary antibody: dilution 1:2000 incubated overnight at 4°C. Click on eLAB BOOK tab to see the details.