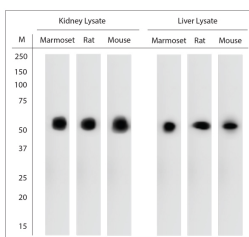


Rabbit antibody to Catalase

Code	OSC00164W
ID Tag	Rb1024-280609-WS
Unit size	100 ul
Immunogen	A synthetic peptide from mouse Catalase conjugated to blue carrier protein was used as the antigen. The antigen is homologous in many other species including rat, human, marmoset, zebrafish, xenopus and guinea pig.
Conjugate	Unconjugated antibody
Also known	CATA, CAT
Host	NZ white rabbit
Purity	Whole serum
Clonality	Polyclonal
Isotype	Polyclonal, whole serum
Applications	IHC, WB. A dilution of 1: 2000 is recommended for IHC-P and 1: 7000 for WB. The optimal dilution should be determined by the end user. Not yet tested in other applications.
Specificity	Specific for Catalase.
Spcs X-react.	Mouse, rat, human, xenopus, zebrafish. Not yet tested in other species.
Format	Lyophilised
Reconstitution	Reconstitute in 100 ul of sterile water. Centrifuge to remove any insoluble material.
Storage	Maintain the lyophilised/reconstituted antibodies frozen at -20C for long term storage and refrigerated at 2-8C for a shorter term. When reconstituting, glycerol (1:1) may be added for an additional stability. Avoid freeze and thaw cycles.
Expiry Date	12 months after reconstitution
Shipping	This item will be shipped to you at ambient temperature in a lyophilised form.
Limitation	For research use only



WB on rat liver lysate. Blocking with 1% LFDm for 30 min at RT; Primary antibody used at 1:7000 dilution incubated overnight at 4C. Click on eLAB BOOK tab to see the details.