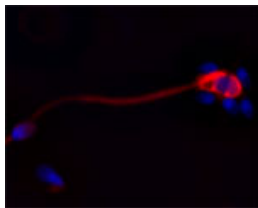


Mouse monoclonal to Cathelicidin: OSX12 clone

Code	OSC00155G
ID Tag	OSX12-210309
Unit size	100 ug
Immunogen	A synthetic peptide from human Cathelicidin antimicrobial peptide (LL-37) conjugated to blue carrier protein has been used as the antigen.
Conjugate	Unconjugated antibody
Also known	LL37, LL-37
Host	Mouse
Purity	IgG
Clonality	Clone OSX12, monoclonal
Isotype	IgG1,k
Applications	IHC, IF, WB, flow cytometry. Use at a concentration of 5-10 ug/ml. The optimal concentration should be determined by the end user. Not yet tested in other applications.
Specificity	Specific for Cathelicidin antimicrobial peptide.
Spcs X-react.	Human, other species not yet tested.
Format	Lyophilised
Reconstitution	Reconstitute in 100 ul of sterile water. Centrifuge to remove any insoluble material.
Storage	Maintain the lyophilised/reconstituted antibodies frozen at -20C for long term storage and refrigerated at 2-8°C for a shorter term. When reconstituting, glycerol (1:1) may be added for an additional stability. Avoid freeze and thaw cycles.
Expiry Date	12 months after reconstitution
Shipping	This item will be shipped to you at ambient temperature in a lyophilised form.
Limitation	For research use only



IF on ethanol-fixed human spermatozoid using Mouse monoclonal to Cathelicidin: OSX12 clone (OSC00155G) at a concentration of 10 ug/ml. DAPI counterstained appearing in blue.

Related Products

OSC00067W	Rabbit antibody to CAP-18 (70-110)
OSC00028G	Rabbit antibody to LL-37
OSC00066W	Rabbit antibody to CAP-18 (10-60)
OSC00039W	Rabbit antibody to scrambled Cathelicidin
OSC00038G	Sheep antibody to LL-37
OSC00037W	Sheep antibody to LL-37