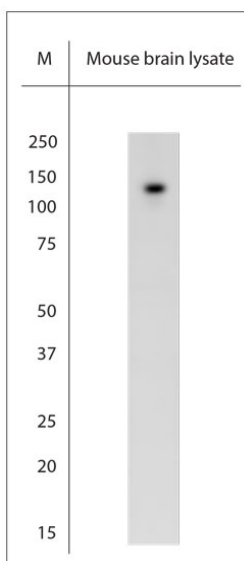


## Rabbit antibody to TRPC6 (10-60)

<b>Code</b>	OST00276G
<b>ID Tag</b>	Rb618-170808-G
<b>Unit size</b>	500 Å, Åµg
<b>Immunogen</b>	A synthetic peptide from taa region 10-60 of rat TRPC6 conjugated to blue carrier protein was used as the antigen. The antigen is homologous with the corresponding sequence in mouse.
<b>Conjugate</b>	Unconjugated antibody
<b>Also known</b>	Short transient receptor potential channel 6, TrpC6, Calcium entry channel, Trp6, transient receptor potential cation channel, subfamily C, member 6, Trrp6, mtrp6
<b>Host</b>	NZ white rabbit
<b>Purity</b>	IgG
<b>Clonality</b>	Polyclonal
<b>Isotype</b>	Polyclonal, IgG
<b>Applications</b>	WB. A concentration of 3-10 µg/ml is recommended. The optimal concentration should be determined by the end user. Not yet tested in other applications.
<b>Specificity</b>	Specific for TRPC6.
<b>Spes X-react.</b>	Mouse, rat. Other species not yet tested.
<b>Format</b>	Lyophilised
<b>Reconstitution</b>	Reconstitute in 500 µl of sterile water. Centrifuge to remove any insoluble material.
<b>Storage</b>	Maintain the lyophilised/reconstituted antibodies frozen at -20°C for long term storage and refrigerated at 2-8°C for a shorter term. When reconstituting, glycerol (1:1) may be added for an additional stability. Avoid freeze and thaw cycles.
<b>Expiry Date</b>	12 months after reconstitution
<b>Shipping</b>	This item will be shipped to you at ambient temperature in a lyophilised form.
<b>Limitation</b>	For research use only



WB on mouse brain lysate. Blocking: 1% LFDM for 30 min at RT; primary antibody: dilution 5 ug/ml incubated at 4C overnight.

### Related Products

OST00197W Rabbit antibody to TRPC6 (10-60)