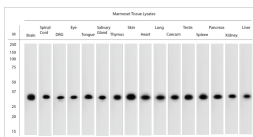




Rabbit antibody to GAPDH

Code	OSG00033G
ID Tag	Rb659-060908-G
Unit size	500 Å, Åµg
Immunogen	A synthetic peptide from rat GAPDH conjugated to blue carrier protein was used as the antigen. The antigen is homologous in mouse and shares 90% identity with human sequence.
Conjugate	Unconjugated antibody
Also known	38 kDa BFA dependent ADP ribosylation substrate, BARS-38, Glyceraldehyde-3-phosphate dehydrogenase
Host	NZ white rabbit
Purity	IgG
Clonality	Polyclonal
Isotype	Polyclonal, IgG
Applications	IHC, WB. A concentration of 1-5 µg/ml is recommended. The optimal concentration should be determined by the end user. Not yet tested in other applications.
Specificity	Specific for GAPDH.
Spcs X-react.	Rat, mouse, human, marmoset. Other species not yet tested.
Format	Lyophilised
Reconstitution	Reconstitute in 500 µl of sterile water. Centrifuge to remove any insoluble material.
Storage	Maintain the lyophilised/reconstituted antibodies frozen at -20°C for long term storage and refrigerated at 2-8°C for a shorter term. When reconstituting, glycerol (1:1) may be added for an additional stability. Avoid freeze and thaw cycles.
Expiry Date	12 months after reconstitution
Shipping	This item will be shipped to you at ambient temperature in a lyophilised form.
Limitation	For research use only



WB on marmoset tissue lysates. Lysates were prepared in Ripa buffer containing 1% Triton X-100, 1% SDS and 1% SDC. Blocking: 1% LFDM for 30 min at RT; primary antibody: dilution 1:20000 incubated at 4C overnight. Click on eLAB BOOK tab to see the details.