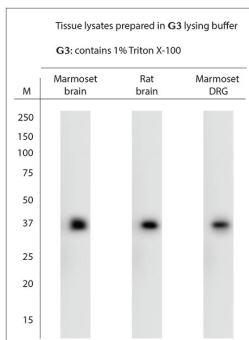


## Rabbit antibody to TGN38

<b>Code</b>	OST00227W
<b>ID Tag</b>	Rb705-060908-WS
<b>Unit size</b>	100 Åµl
<b>Immunogen</b>	A synthetic peptide from mouse TGN38 conjugated to blue carrier protein was used as the antigen.
<b>Conjugate</b>	Unconjugated antibody
<b>Also known</b>	TGN, Trans-Golgi network protein TGN51, TGN46, TGN48, TGN38 homolog, Trans-Golgi network integral membrane protein 2, TGOLN2
<b>Host</b>	NZ white rabbit
<b>Purity</b>	Whole serum
<b>Clonality</b>	Polyclonal
<b>Isotype</b>	Polyclonal, whole serum
<b>Applications</b>	IHC, WB. A dilution of 1: 2000 is recommended. The optimal dilution should be determined by the end user. Not yet tested in other applications.
<b>Specificity</b>	Specific for TGN38 (or TGN46, TGN48, TGN51 in human).
<b>Spcls X-react.</b>	Rat, mouse, human, marmoset. Other species not yet tested.
<b>Format</b>	Lyophilised. This product contains 0.02% benzalkonium chloride.
<b>Reconstitution</b>	Reconstitute in 100 Åµl of sterile water. Centrifuge to remove any insoluble material.
<b>Storage</b>	Maintain the lyophilised/reconstituted antibodies frozen at -20Å°C for long term storage and refrigerated at 2-8Å°C for a shorter term. When reconstituting, glycerol (1:1) may be added for an additional stability. Avoid freeze and thaw cycles.
<b>Expiry Date</b>	12 months after reconstitution
<b>Shipping</b>	This item will be shipped to you at ambient temperature in a lyophilised form.
<b>Limitation</b>	For research use only



WB on tissue lysates. Blocking: 1% LFDM for 30 min at RT; primary antibody: dilution 1:2000 incubated overnight at 4C. Click on eLAB BOOK tab to see the details.

### Related Products

OST00228G	Rabbit antibody to TGN38
OST00479W	Guinea pig antibody to TGN38